

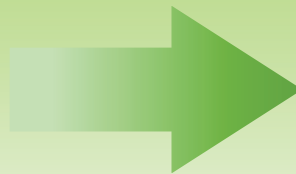
# VGA Printer to DVI2USB 3.0

As technology changes, Epiphan periodically discontinues a product and substitutes it with a successor product. The following product comparison gives our customers the confidence to migrate from VGA Printer to using DVI2USB 3.0 with a laptop.

The new solution is faster, more flexible and less expensive than VGA Printer.



Discontinued as of  
November 3, 2014



Replaced by:  
DVI2USB 3.0,  
used with a laptop

## COMPARISON

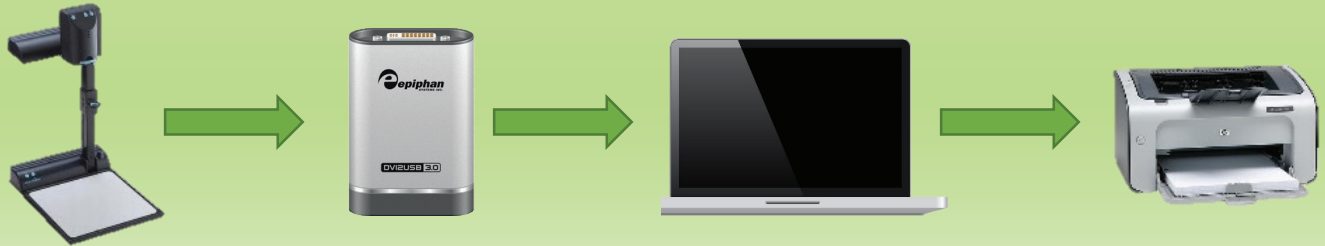
	VGA Printer	DVI2USB 3.0
PostScript Printer Support	✓	✓
Non-PostScript Printer Support	-	✓
Print Speed	slow	laptop print speed
Print over Wi-Fi and USB	-	✓
Print over Ethernet	✓	✓
Image preview before print	✓ (with monitor)	✓ (always)
Timestamp image	✓	✓ (customizable)
Crop image	-	✓
Self-contained solution	✓	-
Price	higher	lower*

\*even with the addition of a low-cost laptop to run the DVI2USB 3.0 capture software, DVI2USB 3.0 is a lower cost solution than VGA Printer.



## PREREQUISITES

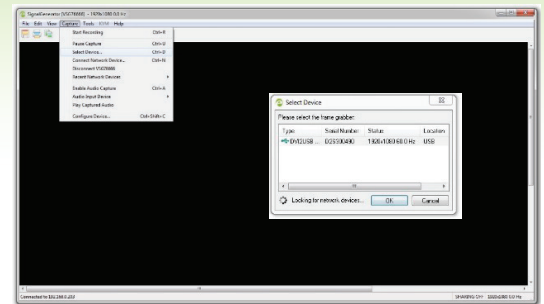
1. Your video source (document camera, ultrasound machine, microscope, etc.).
2. An Epiphan DVI2USB 3.0 video grabber.
3. A laptop (or desktop) computer with Epiphan's capture software installed.

## PHYSICAL CONFIGURATION



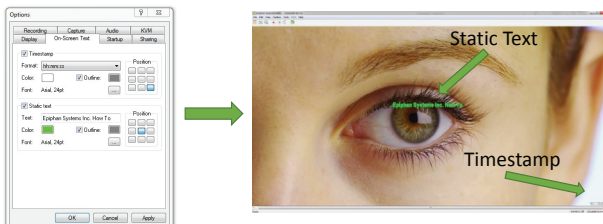
## CAPTURE AND PRINT

1. Ensure the Epiphan capture tool is installed on the laptop.
2. Connect the source to the DVI2USB 3.0.
3. Connect the DVI2USB 3.0 to the laptop.
4. Open the Epiphan Capture Tool.
5. Click Capture > Select Device.
6. Choose DVI2USB 3.0 from the list of devices and click OK.
7. Your video source appears!
8. Press the Print button  to send a screen capture to the printer.
9. Or press the Save button  to save the snapshot and print it later.



## OPTIONAL TIMESTAMP/BRANDING

1. Select Tools > Options...
2. Select the On-Screen Text tab.
3. Enable Timestamp and/or Static Text Options.
4. Choose the format, font, size, color, position, etc.
5. Click Apply.



## OPTIONAL CROPPING

1. Select Tools > Options...
2. Select the Capture tab.
3. Enable hardware cropping.
4. Specify the crop sizes for each side (in pixels).
5. Click Apply.

